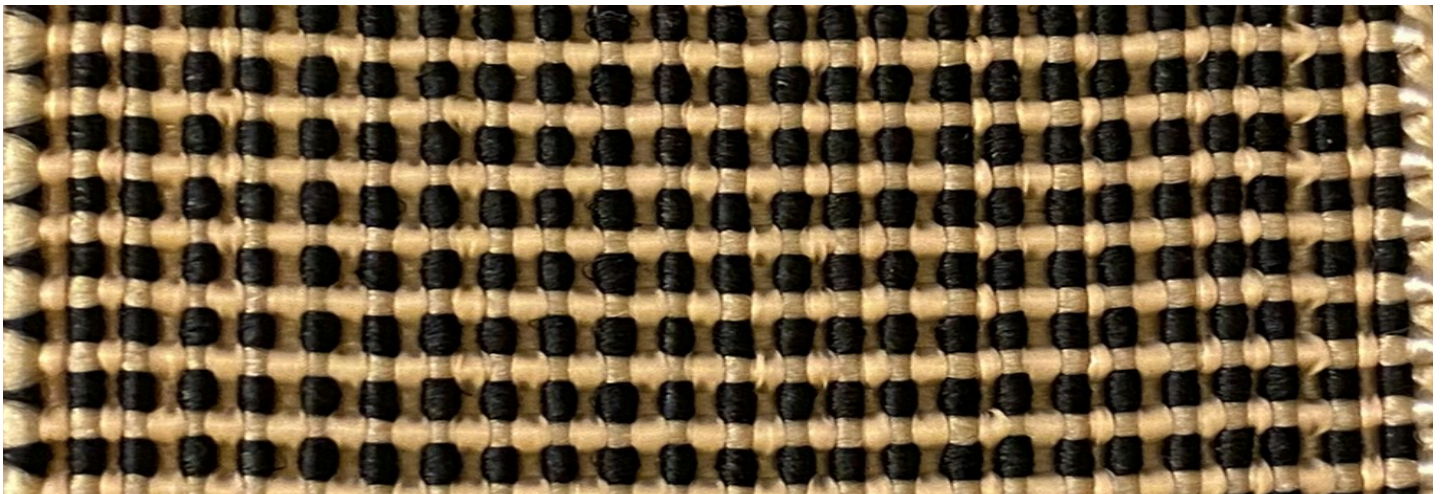




WIDTH: 2" or 3"

ATLAS WEBBING



# ATLAS

Warp consists of eight covered rubber cords per centimeter. Every other one is a double rubber. No other material such as polypropylene is used in the warp direction. Rubber is covered with three ends of rayon yarn in opposite directions to give the cord a balanced state



## COMPOSITION

**Polypropylene:** 1000 denier, fibrillated

**Rubber:** 2 gauge, natural

**Rayon:** 10 singles, spun

**Latex:** Natural Compounded. Compounds are antioxidants to retard ozone, UV light and aging.

**Weft:** 1000 denier polypropylene yarn

Semi-finished webbing is run through liquid latex bath under pressure and heat seat.

The above mentioned data is subject to the allowed tolerance of  $\pm 5\%$  for elastic materials.